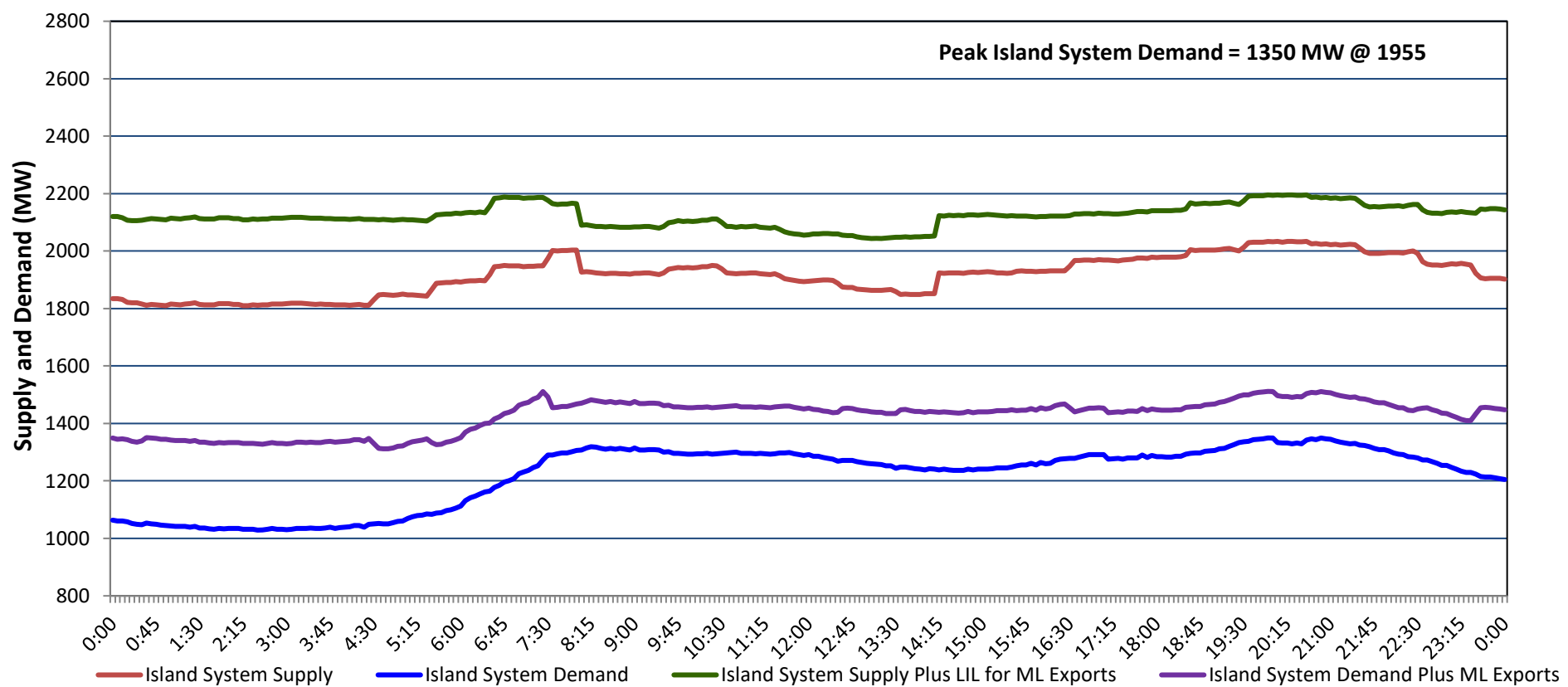


Newfoundland Labrador Hydro (NLH) Supply and Demand Status Report Filed Friday, March 14, 2025

Section 1 Island Interconnected System - Supply, Demand & Exports Actual 24 Hour System Performance For Thursday, March 13, 2025



Island Supply Notes For March 13, 2025

- A As of 0801 hours, February 22, 2025, Holyrood Unit 3 available at 130 MW due to forced derating (150 MW).
- B As of 0940 hours, March 10, 2025, Holyrood Unit 1 unavailable due to planned outage 105 MW (170 MW).
- C As of 0952 hours, March 11, 2025, Granite Canal Unit available at 32 MW due to forced derating (40 MW).
- D At 0803 hours, March 13, 2025, Bay d'Espoir Unit 3 unavailable due to planned outage (76.5 MW).
- E At 1413 hours, March 13, 2025, Bay d'Espoir Unit 3 available (76.5 MW).

Section 2 Island Interconnected System - Supply, Demand & Outlook

Fri, Mar 14, 2025	Island System Outlook ²	Seven-Day Forecast	Island System Daily Peak Demand (MW)	
			Forecast ⁸	Adjusted ⁶
Island System Supply: ⁴	2,061 MW	Friday, March 14, 2025	1,530	1,432
NLH Island Generation: ^{3,7}	1,495 MW	Saturday, March 15, 2025	1,390	1,294
NLH Island Power Purchases: ⁵	105 MW	Sunday, March 16, 2025	1,325	1,230
NP and CBPP Owned Generation:	215 MW	Monday, March 17, 2025	1,215	1,121
LIL/ML Net Imports to Island: ⁹	246 MW	Tuesday, March 18, 2025	1,115	1,022
		Wednesday, March 19, 2025	1,145	1,052
7-Day Island Peak Demand Forecast:	1,530 MW	Thursday, March 20, 2025	1,135	1,042

Island Supply Notes For March 14, 2025

- Notes:
1. Generation outages for running and corrective maintenance are included. These are not unusual for power system operations. They generally do not impact customer supply. Hydro schedules outages to system equipment whenever possible to coincide with periods when customer demands are low and sufficient supply reserves are available. However, from time to time equipment outages are necessary and reserves may be impacted.
 2. As of 0800 Hours.
 3. Gross continuous unit output.
 4. Gross output from all Island sources (including Note 3).
 5. NLH Island Power Purchases include: ML Imports, Exploits Generation, Rattle Brook, Star Lake, Wind Generation and capacity assistance (when applicable).
 6. Adjusted for interruptible load and the impact of voltage reduction when applicable.
 7. Due to limitations inherent in the design of combustion turbines, the output of combustion turbines may be reduced in the event that ambient temperatures exceed the threshold required for full rated output. This threshold is dependent on the design of each turbine.
 8. Does not include ML Exports.
 9. LIL Import sunk in the Island System. Actual LIL flows will be restricted by various system conditions including, but not limited to, Island Load, ML Exports and Avalon Unit status.

Section 3 Island Peak Demand and Exports Information Previous Day Actual Peak and Current Day Forecast Peak

Thu, Mar 13, 2025	Island Peak Demand ¹⁰	19:55	1,350 MW
	Exports at Peak		162 MW
	LIL Net Imports to Island		3,098 MWh
Fri, Mar 14, 2025	Forecast Island Peak Demand		1,530 MW

- Notes: 10. Island Demand is supplied by NLH generation and purchases, LIL Imports plus generation owned and operated by Newfoundland Power and Corner Brook Pulp & Paper (Deer Lake Power, DLP).